

An aerial photograph of a city at sunset. A multi-lane highway bridge spans a wide river in the foreground. The city is densely packed with buildings, green spaces, and parking lots. The sky is a mix of orange, yellow, and blue, indicating the time is either dawn or dusk. The word "ELEVATE" is superimposed in large, bold, black letters across the top of the image, with a yellow location pin icon replacing the letter 'V'.

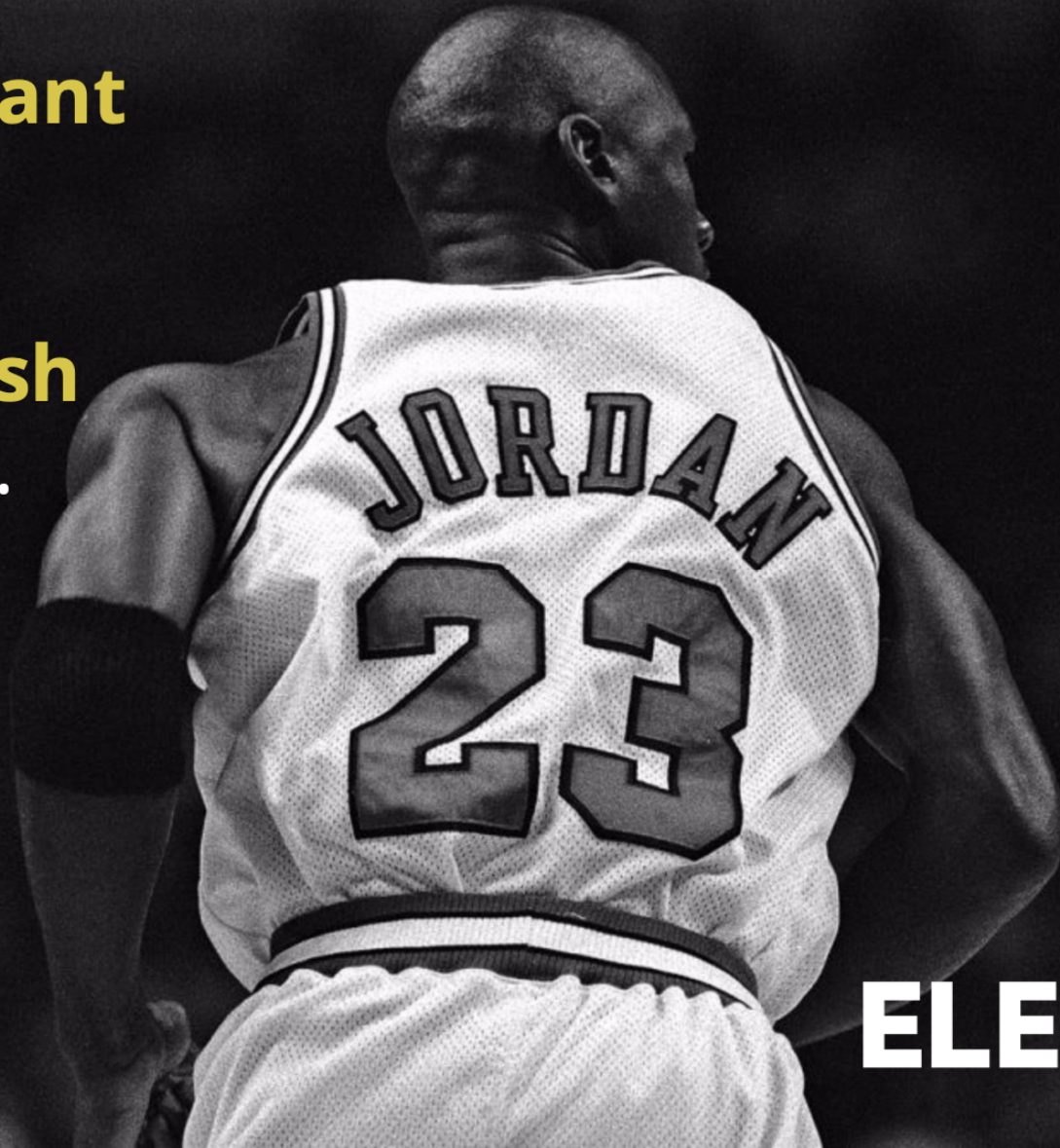
ELEVATE

Delivering on the Promise

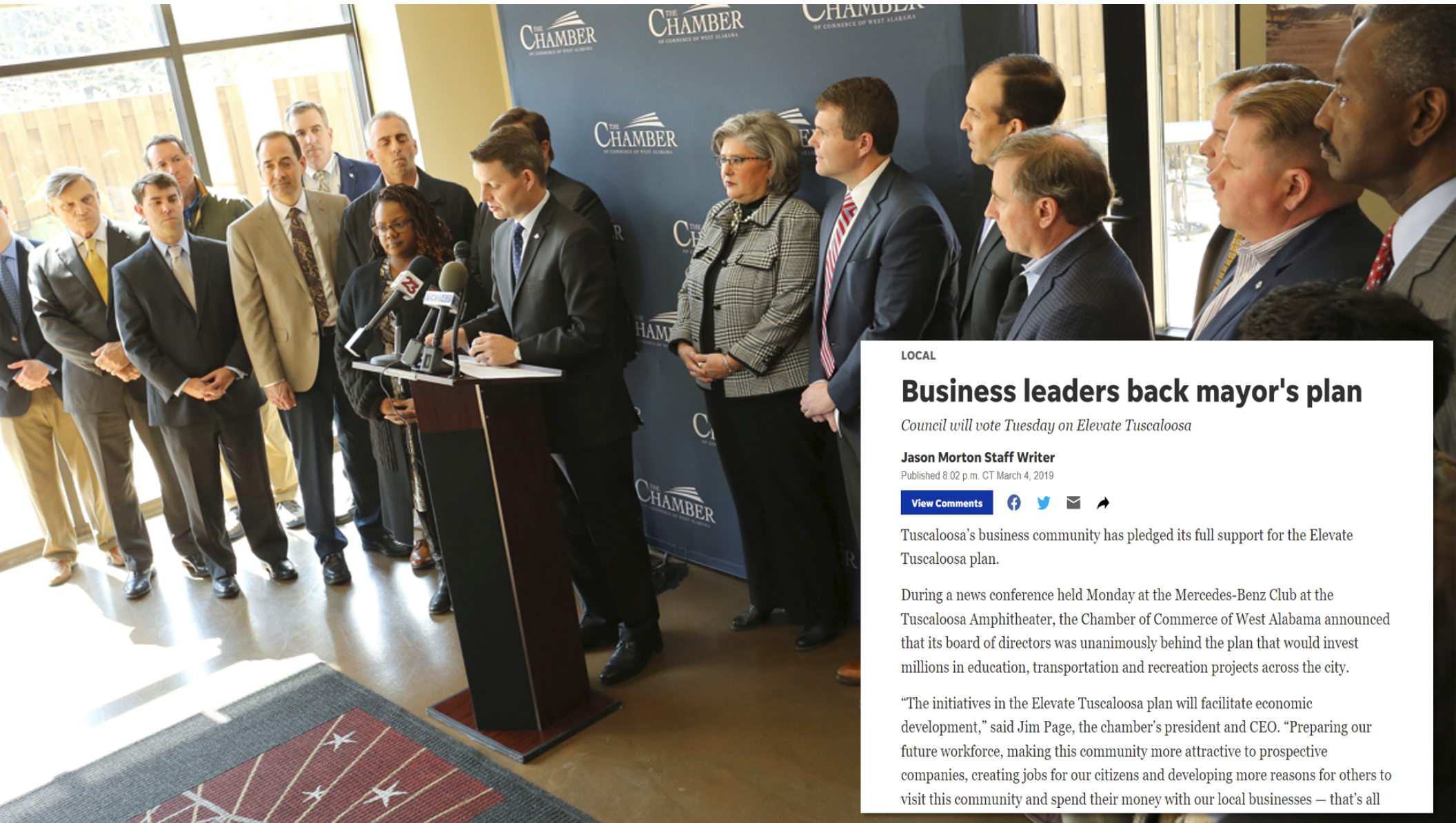
“Some people **want**
it to happen.

Some people **wish**
it would happen.

Others **make** it
happen.”



ELEVATE
TUSCALOOSA



LOCAL

Business leaders back mayor's plan

Council will vote Tuesday on Elevate Tuscaloosa

Jason Morton Staff Writer

Published 8:02 p.m. CT March 4, 2019

[View Comments](#)



Tuscaloosa's business community has pledged its full support for the Elevate Tuscaloosa plan.

During a news conference held Monday at the Mercedes-Benz Club at the Tuscaloosa Amphitheater, the Chamber of Commerce of West Alabama announced that its board of directors was unanimously behind the plan that would invest millions in education, transportation and recreation projects across the city.

"The initiatives in the Elevate Tuscaloosa plan will facilitate economic development," said Jim Page, the chamber's president and CEO. "Preparing our future workforce, making this community more attractive to prospective companies, creating jobs for our citizens and developing more reasons for others to visit this community and spend their money with our local businesses — that's all



Passed in 2019 and implemented in 2020, Elevate Tuscaloosa is an initiative to make generational investments that significantly impact **public safety, education and the economy.**

Advisory Committee



Subcommittees

Connectivity

**Cultural Arts and
Tourism**

Parks and Recreation

Financial Analysis

ELEVATE PROCESS



Citizens



Subcommittees



Advisory Council



Mayor



City Council

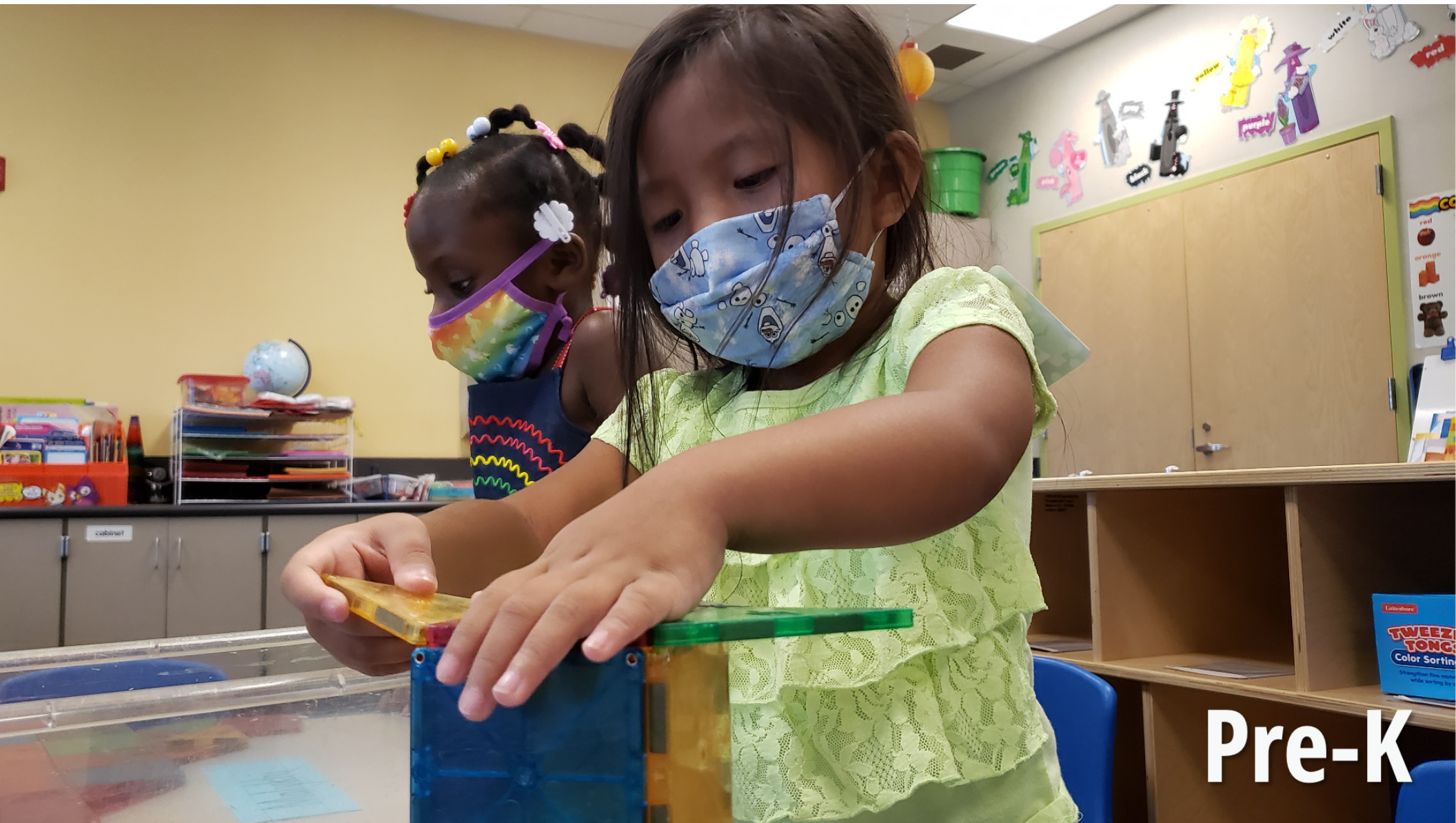
ELEVATE TUSCALOOSA



DELIVERING ON OUR PROMISES



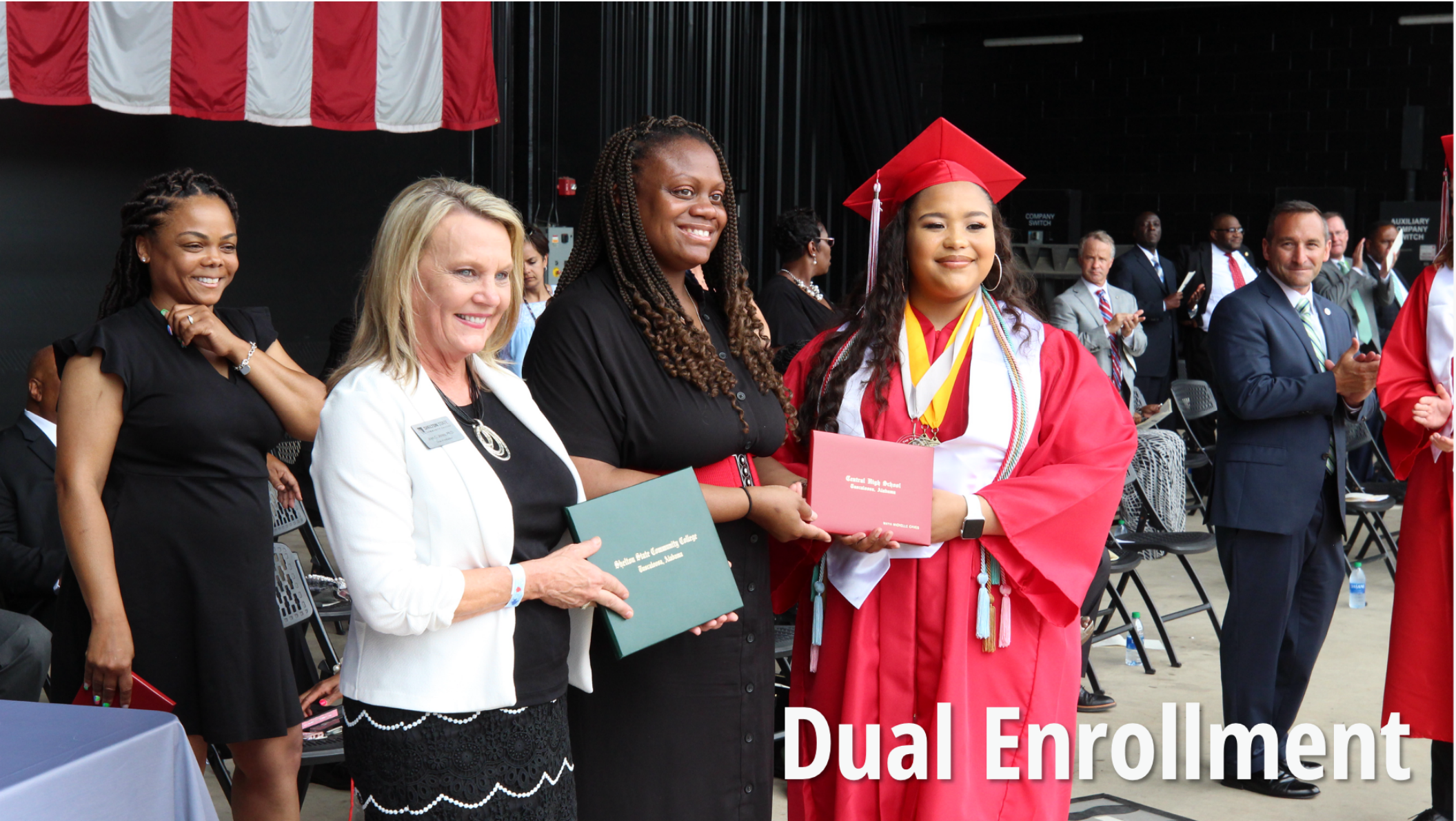
Environmental Services



Pre-K



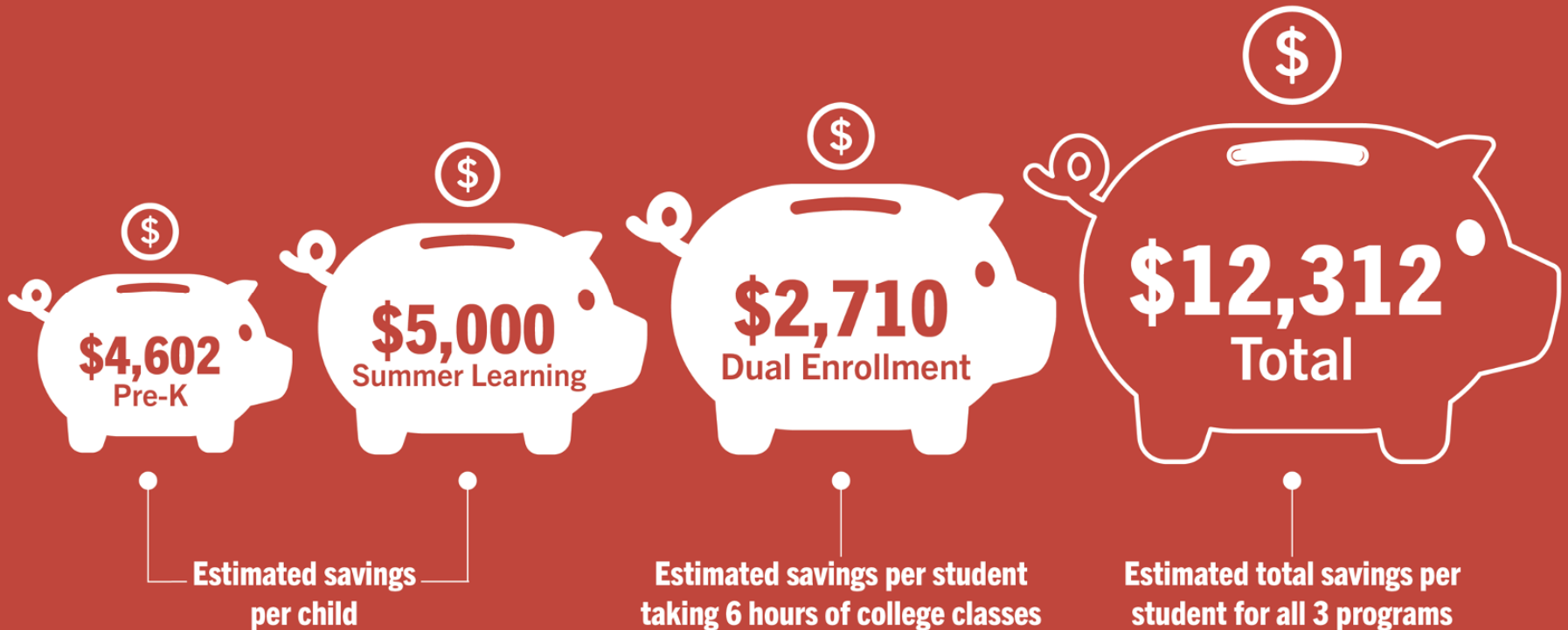
Summer Learning



Dual Enrollment

ELEVATE

EDUCATION





Skilled Trades Academy of West Alabama



COVID-19 Relief

A photograph of three women and a young child standing together outdoors at dusk. The woman on the left is wearing a blue dress and a white shirt, holding a phone. The woman in the middle is wearing a grey t-shirt and jeans. The woman on the right is wearing a black t-shirt and grey pants, holding the child. The child is wearing a blue shirt. In the background, there is a stage with purple lighting and a crowd of people.

DELIVERING ON QUALITY OF LIFE



All-Inclusive Playground



Northern Riverwalk



McDonald Hughes Phase I



Public Safety

CITY OF TUSCALOOSA



DELIVERING ON FINANCIAL ACCOUNTABILITY



**Grants & Partnerships:
Over \$46 million**

Grants & Partnerships

BUILD Grant (Western Riverwalk)	\$ 15,000,000
ADECA (Western Riverwalk)	400,000
FAA (Tuscaloosa National Airport)	8,700,000+
ALDOT (Transit Study)	78,000+
RAISE (University Blvd. Corridor)	17,100,000+
Grant Funding	\$ 41,278,000+
Saban Center	\$ 1,250,000
All-Inclusive Playground	1,000,000+
Randall Family Park & Trailhead	2,700,000+
Partnership Funding	\$4,950,000+
Total Grants & Partnership Funding	\$ 46,228,000+



Tuscaloosa National Airport

elevatetuscaloosa.com/budget



[HOME](#) [ABOUT](#) [UPDATES](#) [EXPLORE PROJECTS](#) [CONTACT](#)



\$110M

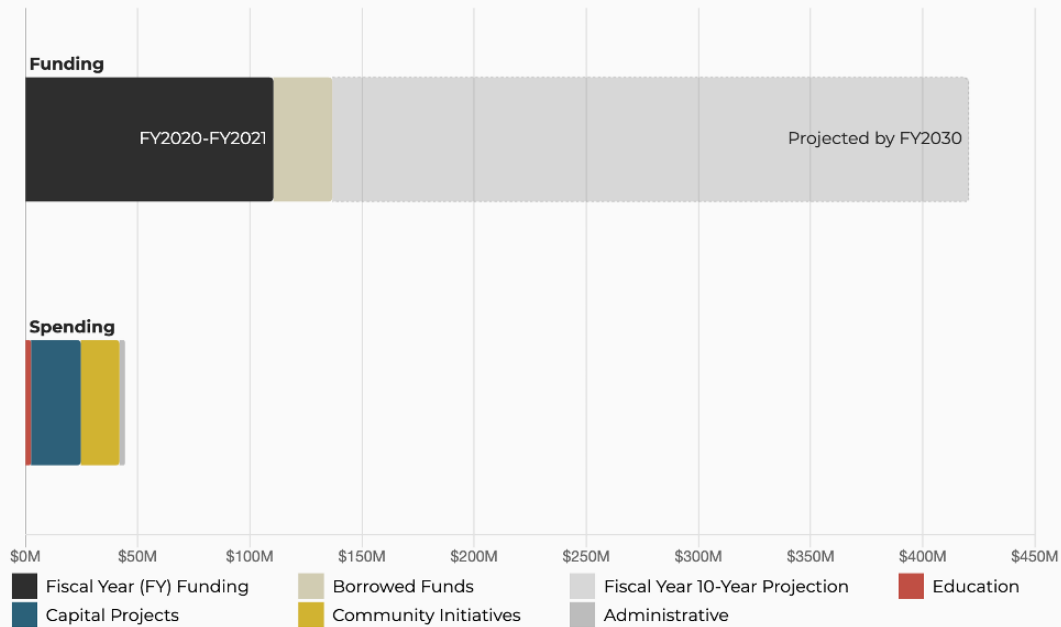
Funding to date

\$43.7M

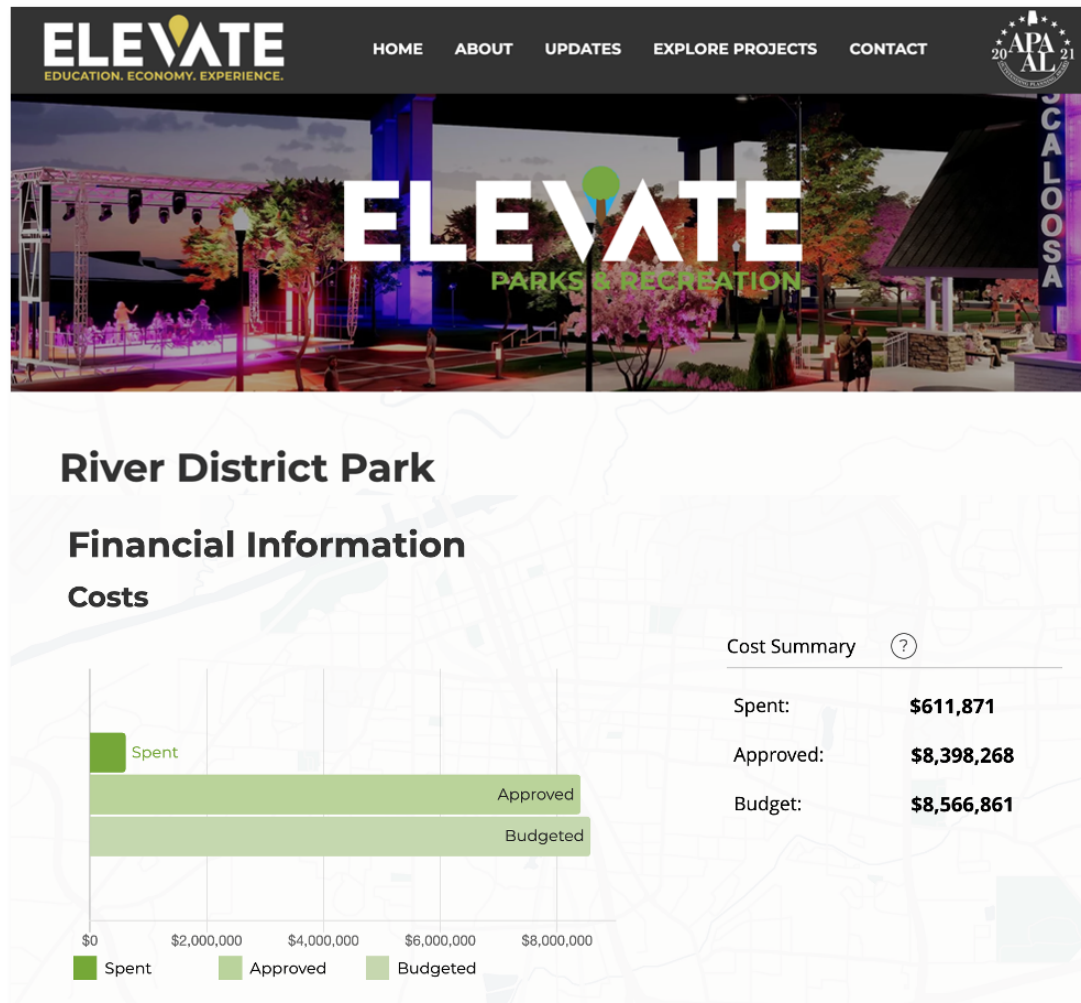
Spending to date

\$420M

10-year Funding Projection



elevatetuscaloosa.com/budget



Operations & Maintenance Fund

15 percent of net revenues are placed in a perpetual fund to cover the costs of all Elevate capital projects

In FY 2022, the estimated amount is **\$2,904,808**

Estimated carry-over from FY 2022 to FY 2023 is **\$1.7 million**

An aerial photograph of a large outdoor event space at dusk. The sun is low on the horizon, creating a warm, golden glow. The area is filled with people walking around. There are several white tents set up, some with branding like 'Coca-Cola' and 'Verizon'. A blue utility box is visible in the foreground. In the background, there are trees and a large building with a sign that says 'Palco Technical on-line'. The overall atmosphere is busy and festive.

**Average annual projected
undesigned balance: \$5,446,895**



DELIVERING ON THE FUTURE

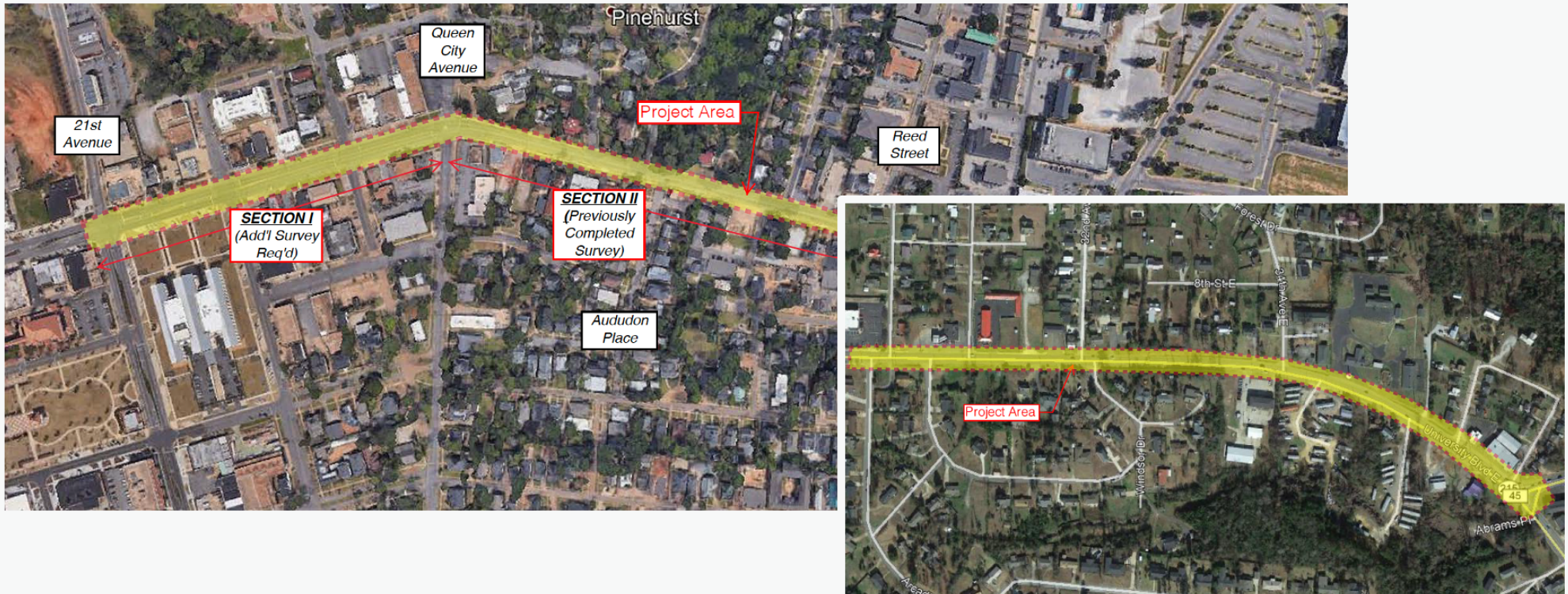


Western Riverwalk



Downtown, Riverfront & Workforce Transit

University Blvd. Corridor





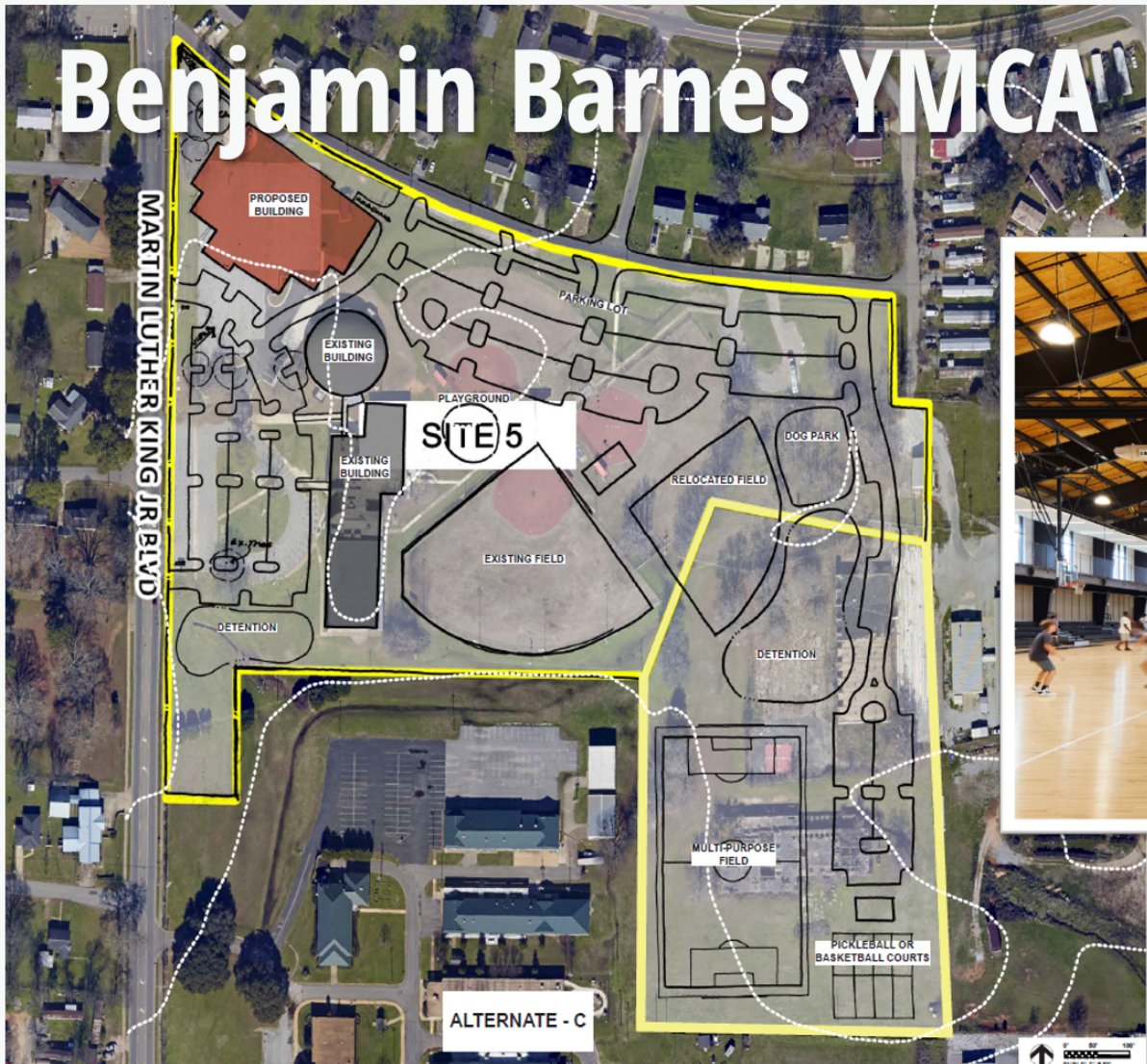
TUSCALOOSA CIVIL RIGHTS MUSEUM
AND LEARNING RESOURCE CENTER

Civil Rights Foundation & Trail



Harris-Nicol Water Recreation & Trails

Benjamin Barnes YMCA





ELEVATE
TUSCALOOSA

ELEVATE
TUSCALOOSA

River District Park



- GENERAL RECOMMENDATIONS:**
1. SECURITY CAMERA INSTALLATION TO BE CONSIDERED THROUGHOUT THE PARK.
 2. LOCALLY SOURCED, LOW MAINTENANCE MATERIALS UTILIZED WHEN FEASIBLE.
 3. PEDESTRIAN SCALE LIGHTING UPDATES RECOMMENDED THROUGHOUT THE PARK.
 4. WIFI ACCESS TO BE CONSIDERED PARK-WIDE OR IN KEY GATHERING LOCATIONS.

NEW VEHICULAR ENTRANCE TO 21st STREET EAST

PARK ENTRANCE LOW WALL WITHIN LANDSCAPE AND LAWN AREA

NEW DECELERATION LANE

LANDSCAPE BERMS (TYP.)

PERIMETER FENCE PERFORATED WITH LANDSCAPED BERMS

RIDGE TOP PLAZA w/ OVERLOOK AND SHADE SAILS

PARK RIDGE GRADE FILLED ABOVE EXISTING PARK

GROUP PICNIC PAVILION / OPEN LAWN

20x20 PICNIC SHELTER (TYP.)

NEW PARK MONUMENT SIGN

PARK RIDGE GRADE FILLED ABOVE EXISTING PARK

RAMPS TO LOWER FIELDS

NEW RESTROOM

SCULPTURE GARDEN APPROX. 1/2 ACRE

GATEWAY SCULPTURE

PARK ENTRANCE LOW WALL WITHIN LANDSCAPE AND LAWN AREA

PERIMETER FENCE PERFORATED

RAMPS TO LOWER FIELDS

GROUP PAVILION / OPEN LAWN

NEW PARKING LOT - REPAVING, LIGHTING, LANDSCAPE, ETC.

CLOSE 10TH AVENUE EAST TO THROUGH TRAFFIC

GATEWAY STRUCTURE

OUTDOOR CLASSROOM STAGE AND SEATING LAWN

THE "ELLIPSE"

BENCH SWINGS (TYP.)

EXISTING PAVILION TO BE RENOVATED

SEATING AREAS - BENCHES SMALL TABLES w/ SEATS

ARBOR STRUCTURES w/ "GREEN WALL" BEYOND FOOD TRUCK PARKING w/ UTILITY CONNECTIONS ON CENTRAL PLAZA

EXISTING RESTROOM TO BE RENOVATED

20x20 PICNIC SHELTER (TYP.)

MAINTENANCE BUILDING w/ FENCED YARD

RELOCATED SNOW HINTON MEMORIAL AND FLAG COURT

DIGITAL INFORMATION KIOSK

GATEWAY STRUCTURE

CLOSE 10TH AVENUE EAST TO THROUGH TRAFFIC

NEW PARKING LOT - REPAVING, LIGHTING, LANDSCAPING, ETC.

EXISTING RESTROOM TO BE RENOVATED

DIGITAL INFORMATION KIOSK

SNOW HINTON MEMORIAL AND FLAG COURT MONUMENT MARKERS TO REMAIN

Snow Hinton Park Phase I



Tuscaloosa Tennis Center



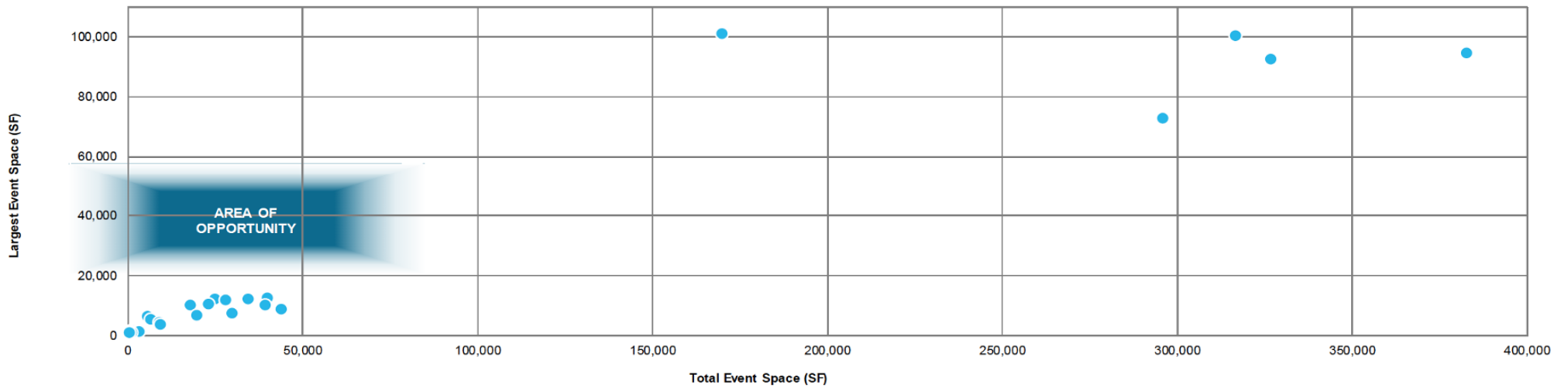
DELIVERING ON THE TRANSFORMATIONAL



Saban Center

Identified Area of Opportunity for Tuscaloosa Event Center

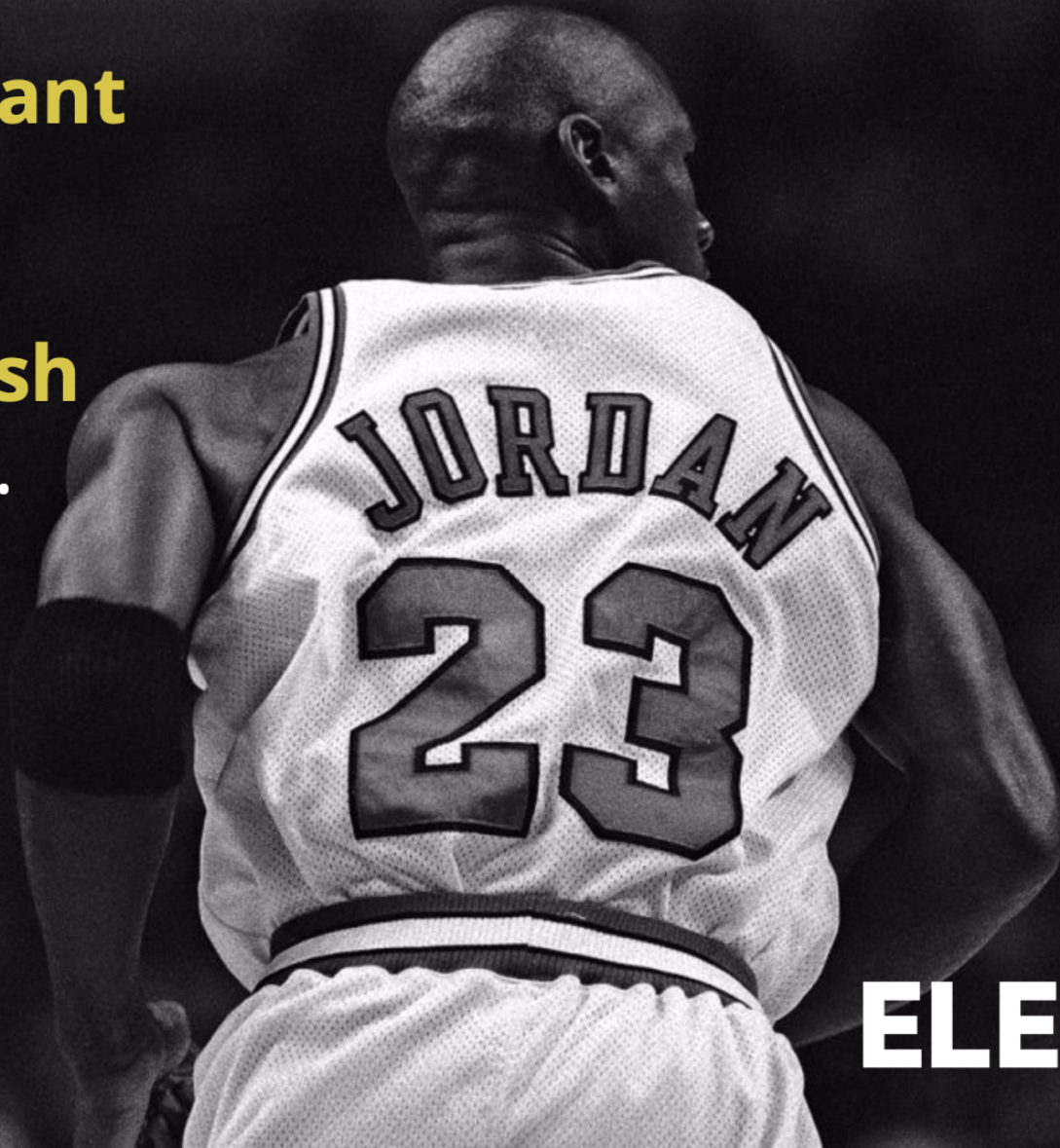
Alabama Event Facility Area of Opportunity



“Some people **want**
it to happen.

Some people **wish**
it would happen.

Others **make** it
happen.”



ELEVATE
TUSCALOOSA